

# M

**RIVERS TO PEAKS**  
*Big Sky Real Estate*

## RENALI AT WILDRIDGE 23



Renali in every aspect is a tribute to the builder's artistry with stone and logs. It provides perfect ski home and mountain getaway with immediate access to all the amenities of The Club at Spanish Peaks, the most spectacular private club in the Rockies. This home is constructed with 16 to 18 inch spruce logs, swelled butt columns and Montana moss rock. 2800 square feet of decking provide visual access to the fairways, mountains and stars. Elegant Pozzi windows bring the Spanish Peaks, Lone Peak, and the Big Sky sunshine into every corner of the home. The one-acre site is bordered on the east by green space which gives it a more spacious feel.

Price : \$4,995,000

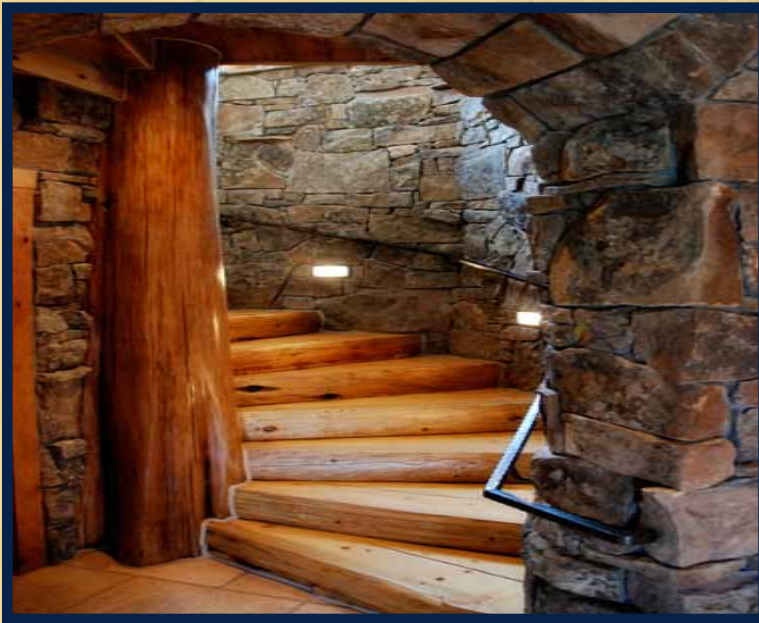
Inside, distressed glazed structural logs, Montana moss stone, and pine tongue-and-groove ceilings surround the Great Room and combine to frame Wilson Peak and the Spanish Peaks. The view expands and changes as one moves through the home on floors of reclaimed oak and elegant wool carpet and provides sweeping views from Lone Peak, through the Spanish Peaks and all the way to the Gallatin Range. There is an audio system with intercoms throughout the home and a smart home system that can be controlled from anywhere. There are custom made wrought iron lightening fixtures throughout, and all interior doors are distressed knotty alder.



The Gourmet Kitchen and Butler's Pantry have cabinets of distressed knotty alder. The countertops are 4" Gold Coast Granite. All appliances are the very best: Wolf range, microwave and oven grill and griddle and stainless steel hood, full sub zero refrigerator, and additional built-in Sub Zero freezer drawers. There is a double-drawer Asco dishwasher in the Butler's Pantry. Also in the pantry are stacked ovens with a warming drawer. Start your day at the wonderful built-in Miele espresso machine. There is a large Wet Bar with a Sub Zero wine cooler and ice maker. The 180 degree mountain views from the dining area are unparalleled.

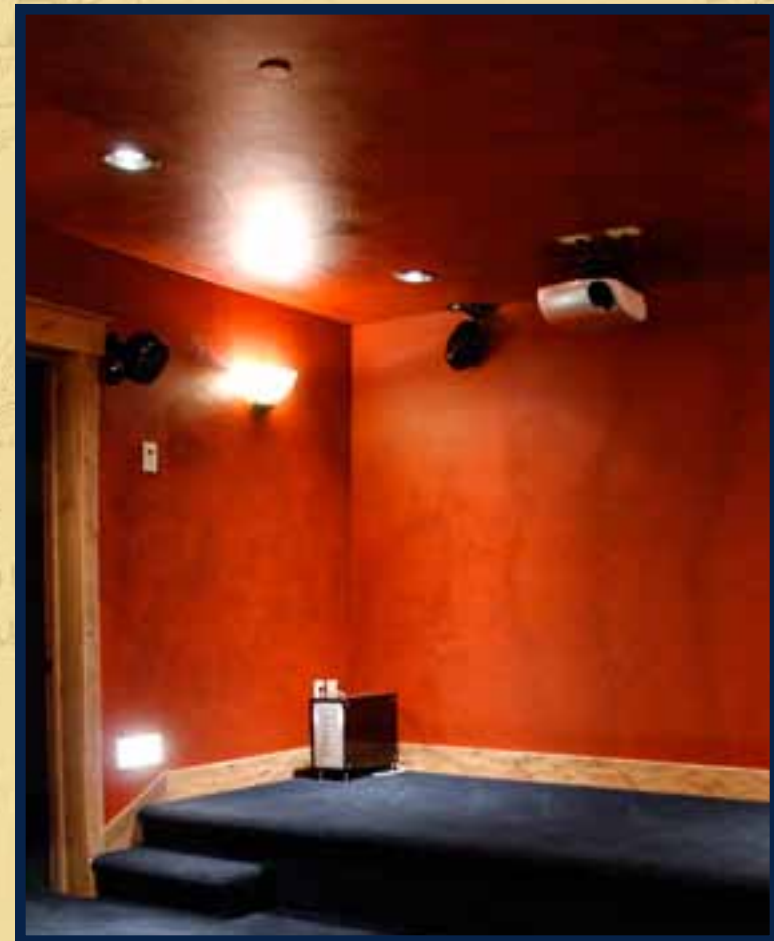
There is a handsome Den/Study with gas fireplace, vaulted ceilings and hardwood floors. It is wired for TV and Audio. Its windows frame a wonderful view of Lone Peak. One the main level adjacent to the oversized 2 car garage, is a full laundry room with Bosch washer and dryer. There are glazed and painted cabinets and 18 inch by 48 inch personal storage cubbies for boots and outdoor or ski gear. Above the garage is a very special feature of this home: an enormous Bunk Suite with a living and play area that could occupy children for hours. It provides for music and TV and has lots of “kid space.” It has a full bath with tub, walk-in shower and is accessed by a private stair off the Den/Study.





An elegant spiral staircase with hammered steel railings takes one downstairs. The stones that line the staircase are heated. The downstairs walkout Great Room and Bar area has views just as fabulous as those on the main level. The stone and log finishes provide a handsome space for entertaining. The bar has a gorgeous granite top and contains a Bosch dishwasher, a Sub Zero wine cooler and ice maker and stacked refrigerator and freezer drawers. There is a large adjacent wine room. A game room with numerous electrical outlets would be perfect for arcade games or would provide an excellent workout facility. This room also contains a stacked Bosch washer and dryer. There are 3 spacious and attractive bedrooms on this level, one with its own gas fireplaces and each one with its own private bath. A jewel of a Media Room provides a state of the art area with theater seating, a 110 inch projection screen and ceiling projector, surround sound and remote controlled air conditioning.





## Best of the West™

The Club at Spanish Peaks is a private 5,700 acre community nestled into the Big Sky valley, offering first-class amenities, a Tom Weiskopf Signature golf course, 4 miles of trout filled fishing tributaries, 300+ acres of private skiing on the Club's own 'Spirit Mountain' as well as private ski-in/ski-out access to Big Sky Resort, which boasts some of the best and largest ski terrain in the country. The golf course doubles in the winter as fabulous groomed cross country ski trails. Members enjoy the service and camaraderie of a club and the peace and quiet of mountain living as it used to be. The Settlement area and Lodge will host a fly casting pond, ice skating, a swimming pool, spa, golf clubhouse and 7 different dining venues all in a casually elegant setting – blue jeans and boots required!

LAND | RANCHES | COMMUNITIES | CONDOMINIUMS | COMMERCIAL | HOMES

Bedrooms: 5  
Baths: 8  
Square Footage: 7,500 Total  
6,600 Livable  
Garage: Attached 2 Car  
Builder: Swan Range Log Homes

Price: \$4,995,000.  
MLS #: 177736  
Taxes: \$12,652.71/annual  
HOA: \$2,525 + membership



EXCLUSIVE LISTING AGENT FOR RENALI AT WILDRIDGE 23

BURKE STANCILL, MEMBERSHIP DEVELOPMENT ASSOCIATE

BSTANCILL@SPANISH-PEAKS.COM | WWW.SPANISH-PEAKS.COM

OFFICE: (406) 993-5400 | MOBILE: (406) 581-6020

This Is Only One of Our Many Premier Big Sky Listings.  
Call Us Today To Learn More About All Of Our Offerings.



This information is subject to errors, omissions, prior sale, change, withdrawal and approval of purchase by owner. All information from sources is deemed reliable, but not guaranteed by Rivers To Peaks Big Sky Real Estate. Application for membership at The Club at Spanish Peaks is required. Membership purchase required at closing. Martha Johnson, Managing Broker | President

