



DUCK'S POND



~~PRICE: \$2,250,000~~ REDUCED PRICE: \$1,725,000.

FEATURES & AMENITIES

Square feet: 3,100
 Bedrooms: 4
 Baths: 4.5
 Acreage: 20 acres
 Fireplaces: 2
 Private pond
 Builder: Hackbarth Construction
 architect: Bayliss
 Exterior: square timber, stone
 Interior: square timber, hardwood
 floors, oversized windows
 Location: The Big EZ
 Amenities: The Club at Spanish Peaks
 Price: \$1,725,000
 MLS: 157306
 Taxes: \$4,289 /annual
 Hoa: \$3,000 / annual

After dropping a fly line off the back deck into the cabin's private pond, retreat onto the splendid turn-key cabin to enjoy some peace and quiet with awesome views. Take some time to un-wind in the well appointed living room by the wood-burning fireplace or play cards and watch tv with the family in the game room overlooking the pond.

With four bedrooms, including three master suites with private bathrooms, and children's built-in bunkroom, all of your guests can relax in your home. An office-nook which views the two-story living area creates a wonderful environment for catching up on correspondence.

Martha Johnson, Broker | President
 Martha@RiversToPeaks.com
 (406) 580.5891

John Bauchman, Sales Associate
 JBauchman@RiversToPeaks.com
 (406) 570-1920

This is only one of our many premier Big Sky listings. Call us today to learn more about all of our offerings.



This information is subject to errors, omissions, prior sale, change, withdrawal and approval of purchase by owner. All information from sources deemed reliable, but not guaranteed by Rivers To Peaks - Big Sky Real Estate, independent investigation is recommended. For properties being purchased at The Club at Spanish Peaks, approval for membership is required prior to closing. If you are currently working with another real estate agent, this is not intended as a solicitation.



John Bauchman, Sales Associate
 JBauchman@RiversToPeaks.com (406) 570-1920

Martha Johnson, President | Broker
 Martha@RiversToPeaks.com (406) 580-5891



Private view from Duck's Pond

- Phenomenal panoramic views into Yellowstone National Park
- 20 acres at The Big EZ with a pond
- Custom hand hewn square beamed timber and stone



DUCK'S POND - FINISH & FEATURES

APPLIANCES: Viking Pro Series Appliances

- Stainless steel, propane gas range, convection oven
- 72" bottom freezer stainless steel refrigerator
- Wall range hood, 450 CFM, variable speed, halogen lamps, commercial style grease filters, stainless steel
- Stainless steel microwave with sensor cooking
- High efficiency, ultra quiet, stainless steel dishwasher
- 3/4 hp garbage disposal
- GE king size capacity, pewter color washer/dryer

CABINETS: Rocky Mountain Furniture- Custom European knotty Alder and recycled barn wood cabinets with dovetail drawers and Blumotion slides, raised panel doors, flat panel door fronts in the kitchen and wet bar. Atsco cabinets- Briarwood style knotty Alder cabinets in laundry, master and guest baths.

FIREPLACES: Masonry wood burning fireplace with Montana Mossy Rock and gas fireplace in family room.

SECURITY/DATA/MUSIC: Pre-wired for security, data and telephone

COUNTERTOPS

- Kitchen: 3 cm brushed Cambrian black granite

- slab with eased edge; undermount copper farm kitchen sink
- Master & guest bath: travertine/tile countertop
- Laundry: tile countertops with backsplash

FLOORING & SHOWERS

- Laundry: Sunset Blend multi-slate
- Master and Guest baths: custom tile shower
- Antique pickle wood flooring throughout

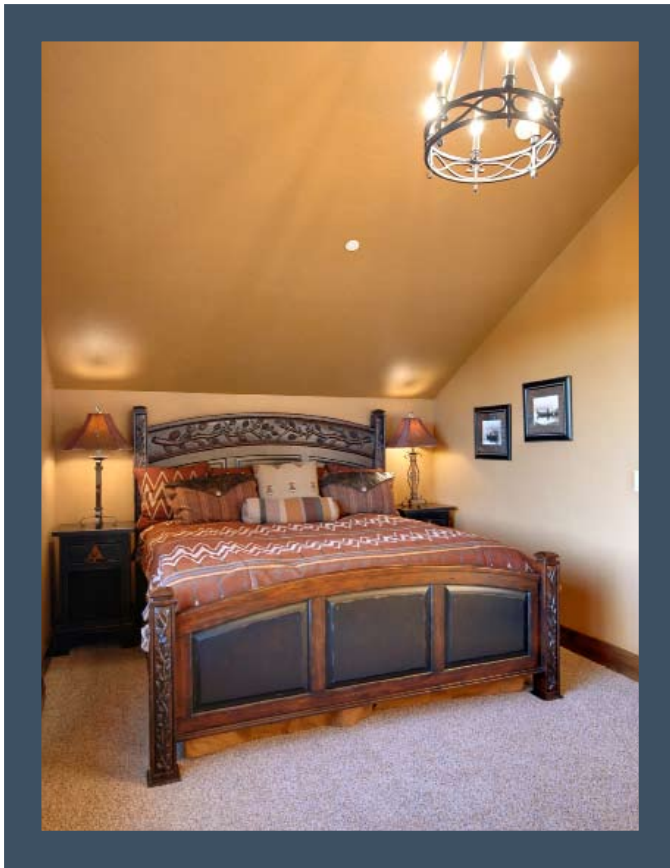
STONEWORK: Montana mossy rock inside and out

CARPET: All bedrooms, closets, stairs and office

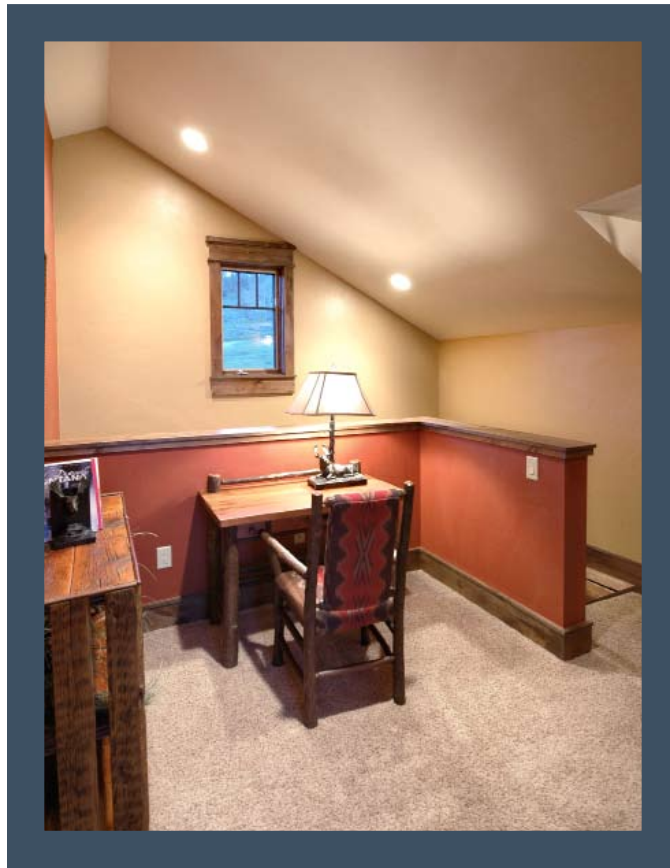
WALL FINISHES: Custom hand troweled painted surfaces

SPECIAL FEATURES: Radiant floor heat, private pond with aerator ready to stock with trout, irrigated landscaping, propane connection for the outside grill, wet bar, separate pantry, two decks, privacy, views, resident moose, elk, deer, and coyotes.

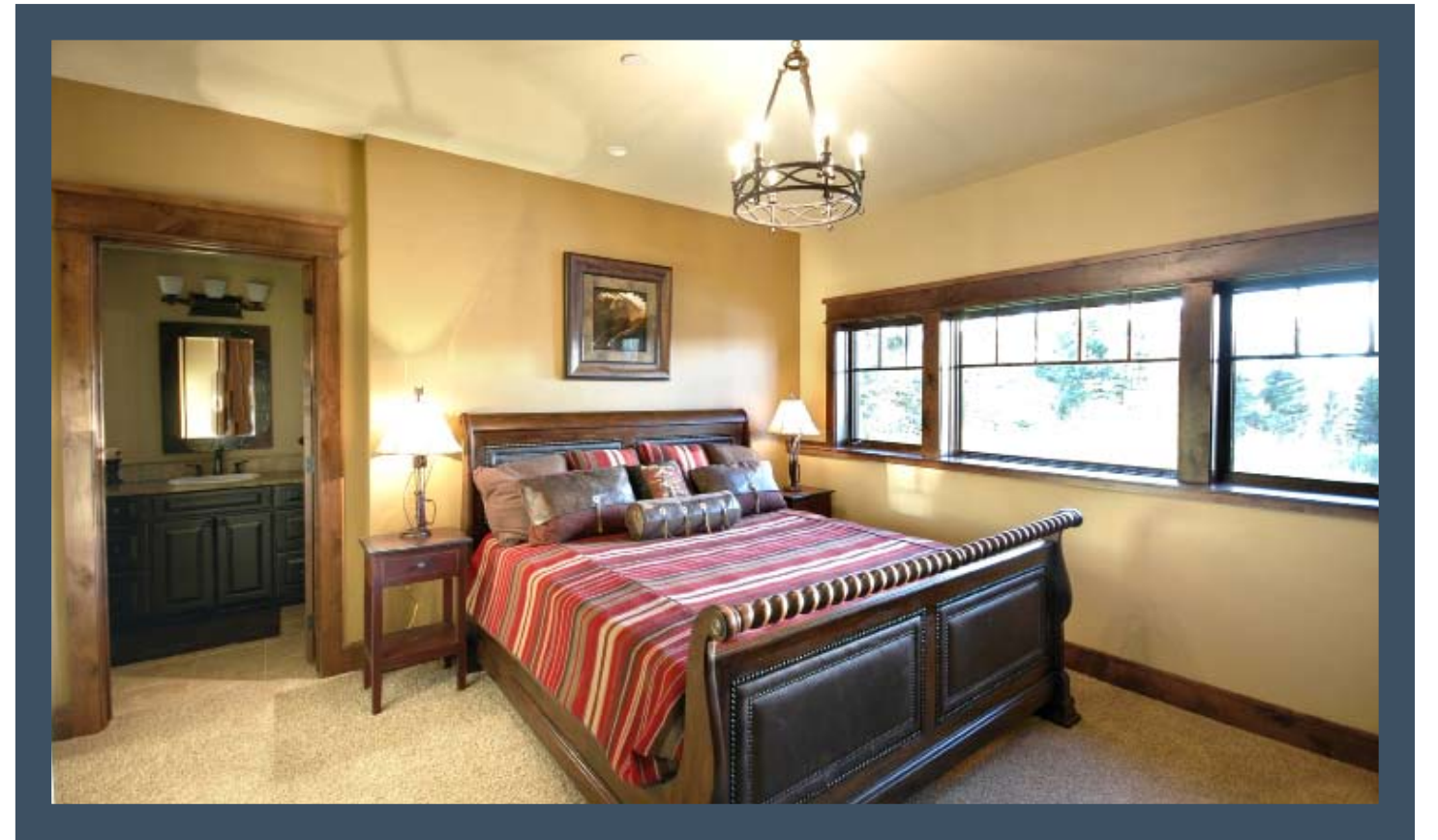
FULLY FURNISHED: furnishings include everything needed to move in tomorrow including dishes, silverware, pots & pans, towels, bedding, pillow and a vacuum.



Master suite #2



Office



Master suite



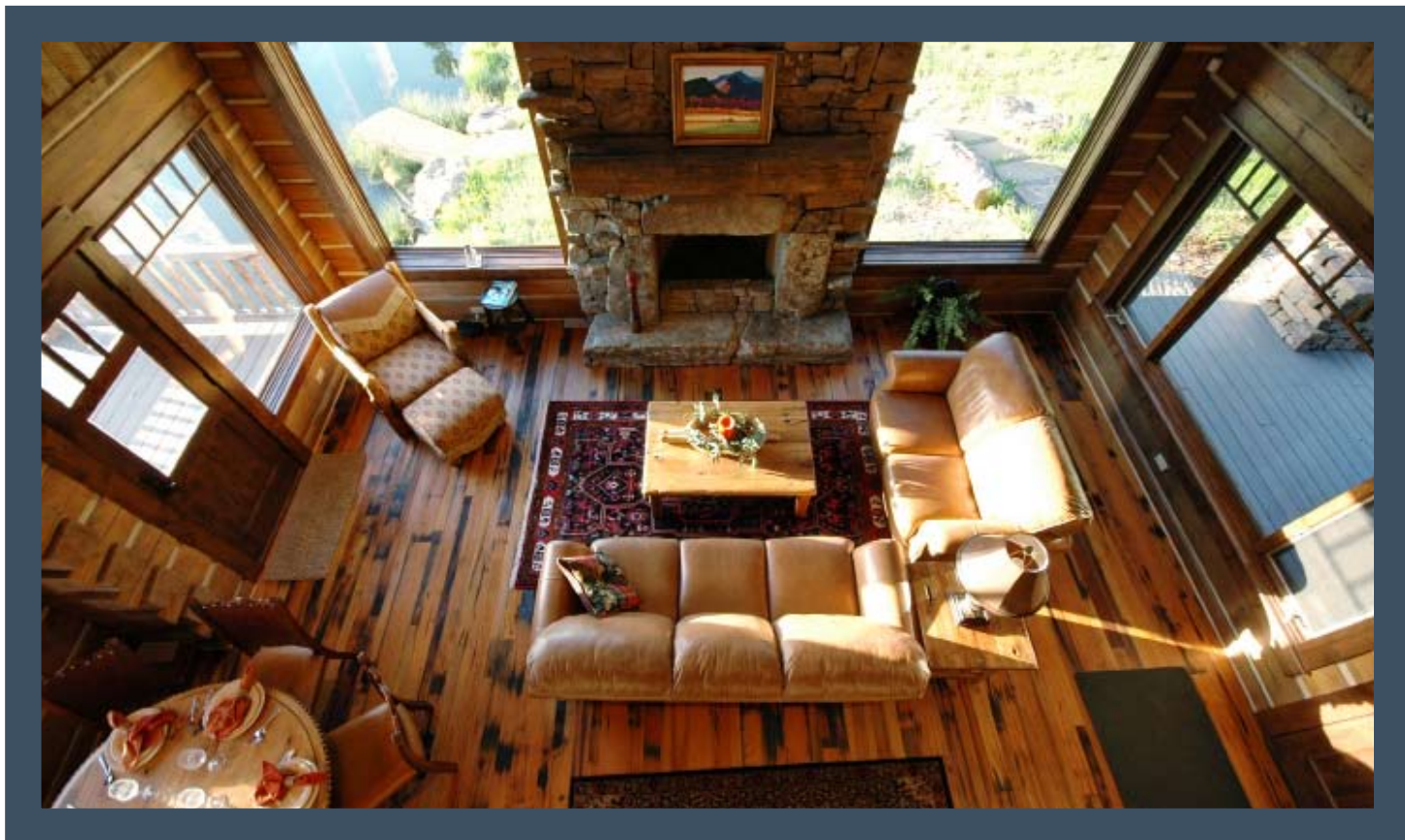
Family/game/tv room



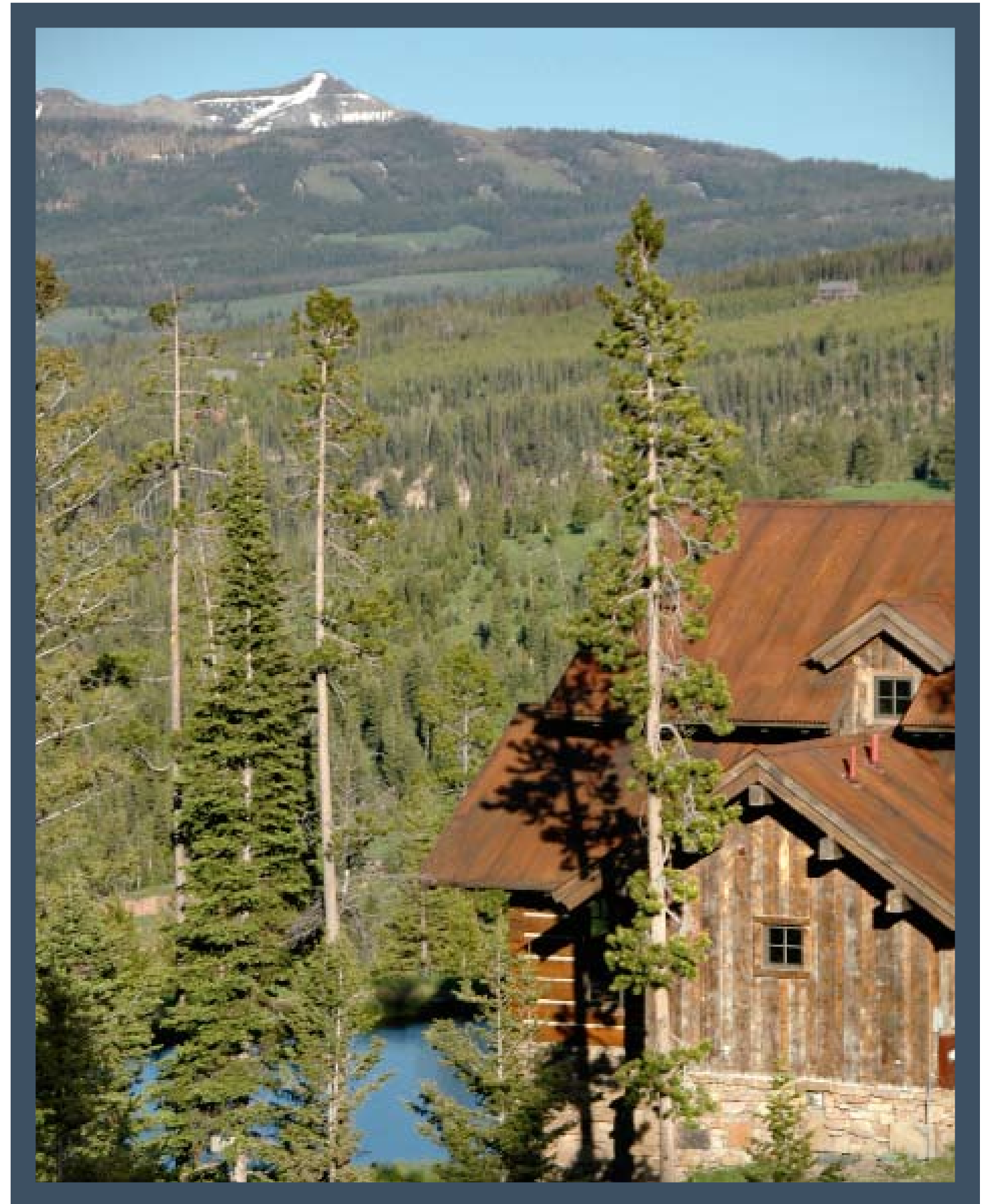
Living room



Bedroom



Living room



View of cabin and pond