

M

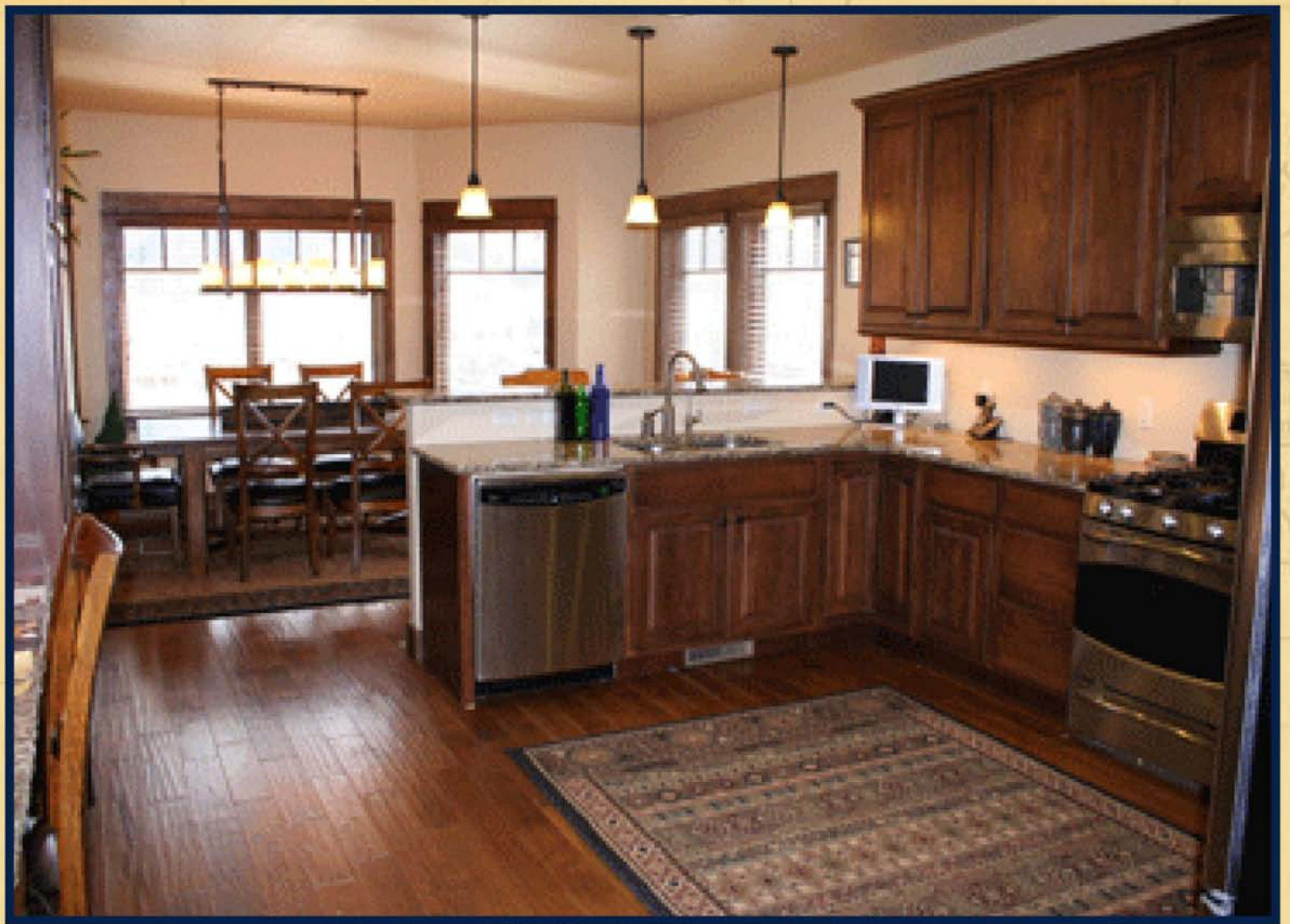
RIVERS TO PEAKS
Big Sky Real Estate

36 RUBY RANGE



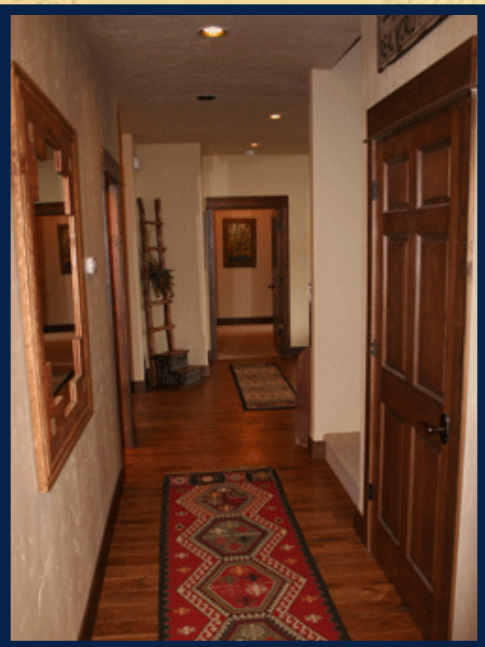
PRICE: \$599,000.

- 4 BEDROOMS | 4.5 BATHS | 3,200 LIVABLE SQUARE FEET
- LOCATED ON 0.637 ACRES IN THE RAMSHORN SUBDIVISION
- OPEN FLOOR PLAN WITH BRIGHT & BEAUTIFUL PICTURE WINDOWS



The home is bright and airy thanks to the large picture windows used throughout. Rustic elegant finishes frame the wonderful views provided. The kitchen is roomy and functional with elegant finishes.







The bright and sunny living room features vaulted ceilings with timber accents and a rustic stone fireplace. French doors open to the roomy deck and breathtaking views of the Gallatin Range



Features & Amenities

Bedrooms:	4	Description: Located in the popular Ramshorn Subdivision this home feature picturesque views of the Gallatin Range and Gallatin River. The kitchen is open and well designed with high-end appliances and granite countertops. The spacious main level master suite has its own walk-in closet. Tile and hardwood flooring compliment the rough hewn timbers and vaulted ceilings of the open and sunny great room.
Baths:	4.5	
Square Footage:	3,200 Livable	
Acreage:	0.637	
Garage:	2 Car Attached	
Price:	\$599,000	
MLS#	156513	
Taxes:	TBD	
HOA Dues:	N/A	
*Listing Broker is Related to Seller		

EXCLUSIVE LISTING BROKER FOR 36 RUBY RANGE
KEVIN BUTLER, BROKER

KEVIN@RIVERTOPEAKS.COM | WWW.RIVERTOPEAKS.COM

OFFICE: (406) 995-2022 | MOBILE: (406) 570-3890

THIS IS ONLY ONE OF OUR MANY PREMIER BIG SKY LISTINGS.
CALL US TODAY TO LEARN MORE ABOUT ALL OF OUR OFFERINGS.



This information is subject to errors, omissions, prior sale, change, withdrawal and approval of purchase by owner. All information from sources deemed reliable but is not guaranteed by Rivers To Peaks Real Estate. Martha Johnson, Managing Broker/President

