

EXCLUSIVELY REPRESENTED BY:

M

RIVERS TO PEAKS
Big Sky Real Estate

SPANISH PEAKS CLUB CONDOMINIUMS



SPANISH PEAKS CLUB

STUNNING RESIDENCES WITH PRIVATE CLUBHOUSE AND POOL/HOT TUB

- ONLY 3 DEVELOPER RESIDENCES LEFT!
- 2 OR 3 BEDROOMS | 3 BATHS + 1 CAR ATTACHED GARAGE
- ON BIG SKY GOLF COURSE AND HIKING & NORDIC TRAIL SYSTEM



The Club

Spanish Peaks Club is an alpine resort community strategically located in Big Sky's Meadow Village. Enjoy a short peaceful walk from your beautiful home to the Meadow Village center where the quaint post office, boutiques, grocery store and restaurants are conveniently located. The Club is fully integrated into the exclusive Meadow Village community via both the Big Sky walking and nordic ski trail system and by the roadways. A complimentary shuttle bus service stops at the entrance to the Club during the ski season for your benefit. A limited selection of 55 distinctive townhomes blending traditional western resort styling with state of the art floor plans and amenities, The Spanish Peaks Club provides open spaces and breathtaking views in all directions. The grounds are professionally landscaped and maintained. Close by you'll enjoy the excitement of winter sports at the renowned Big Sky Resort combined with summer fun sports such as world-class fishing, whitewater rafting, hiking, swimming and mountain biking along with many others. The Big Sky Country is surrounded by endless miles of natural wilderness and lushly forested public lands. The meticulously groomed golf course adjacent to the Club invites enjoyment of peaceful golf outings. A gorgeous hiking and cross-country ski trail passes through the property and connect to the entire trail system. Direct access to Yellowstone National Park and its natural beauty is only 26 miles south.

RESIDENCES

Residence 39D

Price: SOLD
Square Footage: 2,095 sq ft
Bedrooms: 2
Baths: 3
MLS# 135489

Residence 36D

Price: SOLD
Square Footage: 2,095 sq ft
Bedrooms: 2
Baths: 3
MLS# 135488

Residence 46B

UNDER CONTRACT

~~Price: \$439,000.~~
Reduced Price: \$399,900.
Square Footage: 2,215 sq ft
Bedrooms: 2
Baths: 3
MLS# 143666

Residence 48E

Price: SOLD
Square Footage: 2,814 sq ft
Bedrooms: 3
Baths: 3
MLS# 135490

Residence 47A

~~Price: \$479,000.~~
Reduced Price: \$439,900.
Square Footage: 2,403 sq ft
Bedrooms: 3
Baths: 3
MLS# 143664

Estimated Expenses

Taxes: \$3,261 | annual (2007)
BSOA: \$360 | annual
SPC HOA: \$4,373 | annual
*Condo Ice-Melt System Assessment Please Call
Listing Agents for Details.



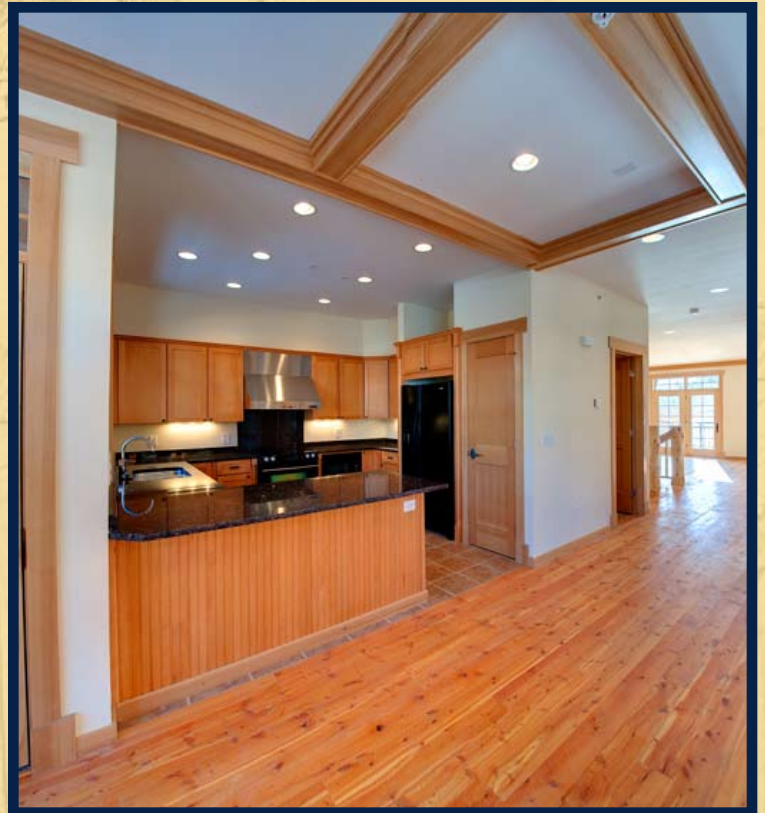
The Residences

These townhomes are accented by wooden beams, impressive stone, custom tile work, and all are designed with floor plans to fit today's lifestyles. All feature spacious great rooms warmed by wood burning fireplaces, gourmet kitchens, tile baths, and lofty ceilings. Designer hardware, custom trim, period lighting fixtures and rustic decor accentuate the western motif. All homes are ready for your upgrade options to customize your mountain hideaway. Additional upgrade options will be available to enhance your relaxation following a day of outdoor activities.



The Area

Both the Big Sky Resort and also the community continue to set standards for skiing and mountain living in the Rockies. Seventeen lifts transport skiers and snowboarders to over 3,600 skiable acres with the most vertical feet in the U.S. The uncrowded slopes feature a variety of terrain for skiers of all levels. In the past 10 years, the resort has invested more than \$120 million into amenities and improvements, including the famous Lone Peak Tram. The Meadow Village surrounds an 18 hole Arnold Palmer Golf Course.





RIVERS TO PEAKS
Big Sky Real Estate

LAND | RANCHES | COMMUNITIES | CONDOMINIUMS | COMMERCIAL | HOMES

Features and Amenities

Main Level: Stunning living room with wood-burning fireplace, two decks, pre-wired for sound. Kitchen and dining area with granite countertops, built-in desk with drawers for the family computer, laundry and mechanical room.

Lower Level: Versatile, recreation room with wall-to-wall carpeting and a walk-out porch for hot-tub or BBQ, tiled entry and foyer areas, full bathroom, ample closet and storage space, heated garage.

Upper Level: Master bedroom with vaulted ceiling and spacious bathroom with tub and double-sinks and shower. Large additional bedroom(s) and full bath.

- Located at 2500 Little Coyote Road, off Spur Road.
- Adjacent to Big Sky Golf Course's driving range and Nordic ski trails.
- Walking distance to shops, dining, groceries, post office, church and amphitheater.
- One Year Builder's Warranty.
- In-floor radiant heat on first floor and electric baseboards on main and upper levels.



EXCLUSIVE LISTING AGENTS FOR SPANISH PEAKS CLUB CONDOMINIUMS

MARTHA JOHNSON, PRESIDENT | BROKER

-OR-

TALLIE JAMISON, ASSOCIATE

MARTHA@RIVERSTOPEAKS.COM | (406) 580-5891

TJAMISON@RIVERSTOPEAKS.COM | 406.600.8081

WWW.RIVERSTOPEAKS.COM | WWW.REALLYBIGSKY.COM

THIS IS ONLY ONE OF OUR MANY PREMIER BIG SKY LISTINGS.
 CALL US TODAY TO LEARN MORE ABOUT ALL OF OUR OFFERINGS.



This information is subject to errors, omissions, prior sale, change, withdrawal and approval of purchase by owner. All information from sources deemed reliable but is not guaranteed by Rivers To Peaks Real Estate. Martha Johnson, Managing Broker/President

