

M

RIVERS TO PEAKS
Big Sky Real Estate

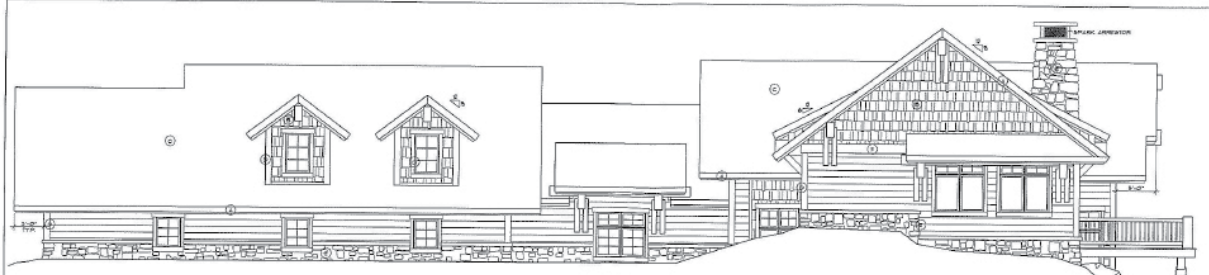
FISH HAAS, RANCH 22



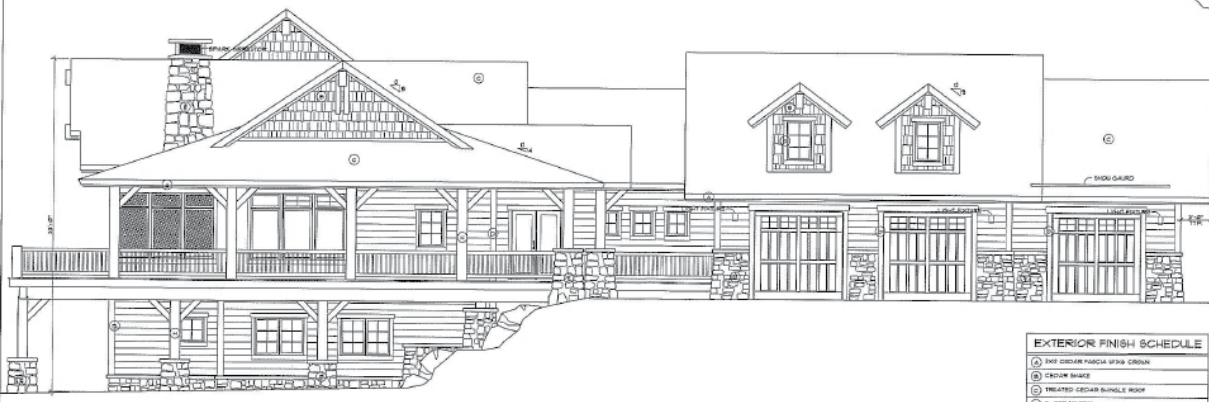
**THE CLUB AT
SPANISH PEAKS**

PRICE: \$2,900,000.

- INCLUDES: 5 BEDROOMS | 6 BATHS | 6,162 TOTAL SQ FT TO-BE-BUILT HOME
- LOCATED IN THE CLUB AT SPANISH PEAKS
- 2.00 ACRES WITH FISHING ACCESS TO THE SOUTH FORK OF THE GALLATIN



1 WEST ELEVATION
SCALE 1/4" = 1'-0"



2 EAST ELEVATION
SCALE 1/4" = 1'-0"

EXTERIOR FINISH SCHEDULE	
1	3/4" CEDAR PARCEL SPIN CEDAR
2	CEDAR SHAKE
3	TREATED CEDAR SHINGLE ROOF
4	3" CEDAR TRIM
5	PONTIACA MASS STONE
6	3/4" CEDAR BELLY BAND
7	RAISED CORRUGATED METAL ROOF
8	2" x 4" KILN DRY
9	2" INSULATED BEVEL LAP

GENERAL NOTES

- CONTRACTOR TO VERIFY ALL DIMENSIONS BEFORE CONSTRUCTION.
- CONTRACTOR WILL ENSURE COMPLIANCE WITH ALL BUILDING CODES, ORDINANCES & DESIGN GUIDELINES.
- SHINGLES AND ROOF FINISHES SUBMITTED (DATE AND CHANGE USED AT SPANISH PEAKS CARES).

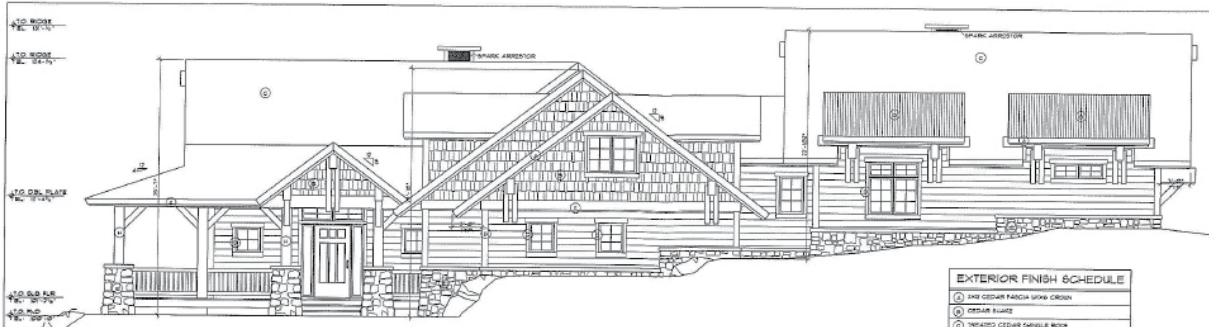
REVISIONS:

JOB No: 0028
 Drawn: SFG
 File Name: 0028.ELEV
 Date: 2.8.15
 Scale: 3/16" = 1'-0"

The FishHaus ...on the South Fork
 RANCH LOT 22, SPANISH PEAKS

SRG ARCHITECTURE
 1005 27th Street
 Steamboat, CO 80487
 970.826.1111
 www.spanishpeaks.com

A6.1
 ELEVATION



3 NORTH ELEVATION
SCALE 1/4" = 1'-0"

EXTERIOR FINISH SCHEDULE	
1	3/4" CEDAR PARCEL SPIN CEDAR
2	CEDAR SHAKE
3	TREATED CEDAR SHINGLE ROOF
4	3" CEDAR TRIM
5	PONTIACA MASS STONE
6	3/4" CEDAR BELLY BAND
7	RAISED CORRUGATED METAL ROOF
8	2" x 4" KILN DRY
9	2" INSULATED BEVEL LAP

GENERAL NOTES

- CONTRACTOR TO VERIFY ALL DIMENSIONS BEFORE CONSTRUCTION.
- CONTRACTOR WILL ENSURE COMPLIANCE WITH ALL BUILDING CODES, ORDINANCES & DESIGN GUIDELINES.
- SHINGLES AND ROOF FINISHES SUBMITTED (DATE AND CHANGE USED AT SPANISH PEAKS CARES).

REVISIONS:

JOB No: 0028
 Drawn: SFG
 File Name: 0028.ELEV
 Date: 2.8.15
 Scale: 3/16" = 1'-0"

The FishHaus ...on the South Fork
 RANCH LOT 22, SPANISH PEAKS

SRG ARCHITECTURE
 1005 27th Street
 Steamboat, CO 80487
 970.826.1111
 www.spanishpeaks.com

A6.0
 ELEVATION



4 SOUTH ELEVATION
SCALE 1/4" = 1'-0"

Best of the West™

The Club at Spanish Peaks is a private 5,700 acre community nestled into the Big Sky valley, offering first-class amenities, a Tom Weiskopf Signature golf course, 4 miles of trout filled fishing tributaries, 300+ acres of private skiing on the Club's own 'Spirit Mountain' as well as private ski-in/ski-out access to Big Sky Resort, which boasts some of the best and largest ski terrain in the country. The golf course doubles in the winter as fabulous groomed cross country ski trails. Members enjoy the service and camaraderie of a club and the peace and quiet of mountain living as it used to be. The Settlement area and Lodge will host a fly casting pond, ice skating, a swimming pool, spa, golf clubhouse and 7 different dining venues all in a casually elegant setting – blue jeans and boots required!

LAND | RANCHES | COMMUNITIES | CONDOMINIUMS | COMMERCIAL | HOMES

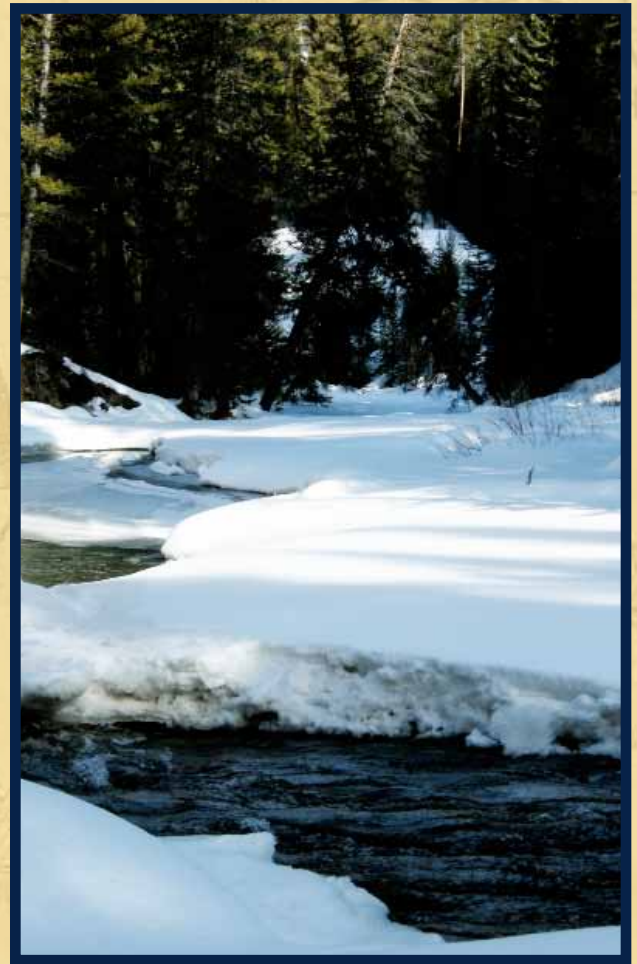
Features and Amenities

Enjoy fishing out the back door on the south fork of the Gallatin River from this well appointed 5 bed 6 bath to-be-built house located on 2 acres within The Club at Spanish Peaks. If fishing, privacy and the amenities of the club are a must on your client's list then don't hesitate to share this wonderful opportunity with them.

Bedrooms: 5
Baths: 6
Acreage: 2.00
Garage: 3 car

Price: \$2,900,000
Taxes: \$5,250 (2009)
HOA: \$2,450 /annual + membership
MLS# 169851

*This Wonderful 2 acre homesite is located in the Popular Ranch Neighborhood and is available unimproved or built with pre-approved home plans by the Architecture Review Committee. Ask Listing Agent for Details.



EXCLUSIVE LISTING AGENT FOR FISH HAAS RANCH 22

WILL BRUNNER, MEMBERSHIP DEVELOPMENT ASSOCIATE

WJBRUNNER@SPANISH-PEAKS.COM | WWW.SPANISH-PEAKS.COM

OFFICE: (406) 993-5400 | MOBILE: (406) 579-9328

THIS IS ONLY ONE OF OUR MANY PREMIER BIG SKY LISTINGS.
CALL US TODAY TO LEARN MORE ABOUT ALL OF OUR OFFERINGS.



This information is subject to errors, omissions, prior sale, change, withdrawal and approval of purchase by owner. All information from sources is deemed reliable, but not guaranteed by Rivers To Peaks Big Sky Real Estate. Application for membership at The Club at Spanish Peaks is required. Membership purchase required at closing. Martha Johnson, Managing Broker | President

